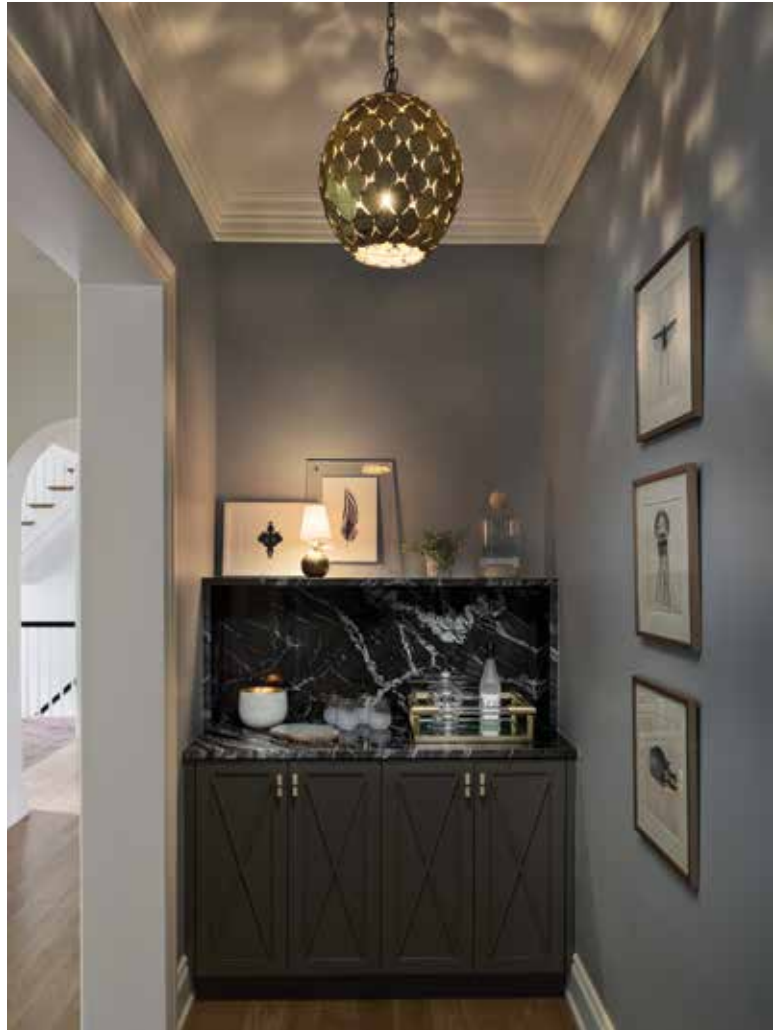


Dayna Flory Interiors, with EuroCraft Interiors | 1ST

Some of the most charming bars are found on bar carts, and that was the inspiration for the nook in this butler's pantry. Eliminating upper cabinets and adding the large floating marble shelf invites guests into the room; the shelf also provides a serving surface, almost doubling the countertop space. Outlets were added above the marble shelf to layer moody lamp lighting with the dramatic overhead light fixture. Black-and-white artwork rests casually on the top shelf, and softens the space when it's party-ready and filled with cocktails and sparkling glassware.



Heller & Associates Design + Build, with Marilynn Silberman from Studio Loft | 2ND



DesRosiers Architects | 3RD